



PERSONS NOT IN THE LABOUR FORCE, AUSTRALIA, (including persons who wanted to work but were not defined as unemployed) SEPTEMBER 1984 PRELIMINARY

PHONE INQUIRIES *for more information about these statistics*—contact Ms Gail Carters on Canberra (062) 52 6503 or any of our State offices.
other inquiries including copies of publications—contact Information Services on Canberra (062) 52 6627 or in any of our State offices.

MAIL INQUIRIES *write to* Information Services, ABS, P.O. Box 10, Belconnen, A.C.T. 2616 or any of our State offices.

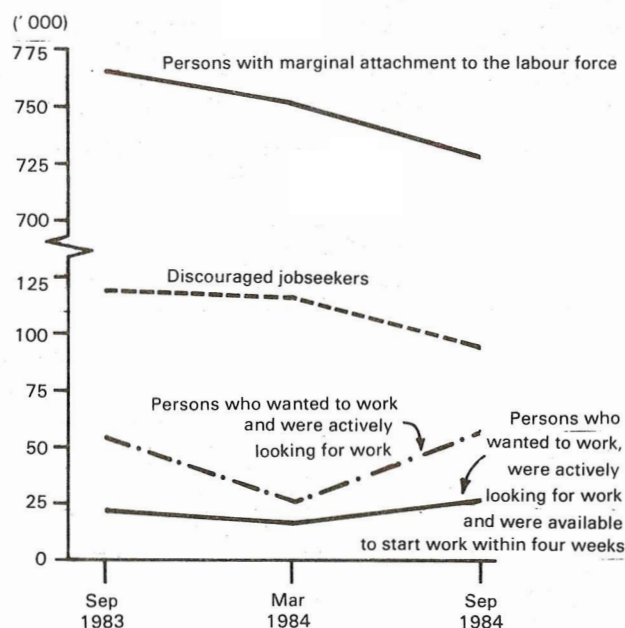
MAIN FEATURES

Notes

(i) *New or amended concepts and definitions were introduced in the September 1983 survey, causing a break in series. Refer to Explanatory notes for more detail.*

(ii) *Survey estimates are subject to sampling variability, as explained in paragraph 32 following.*

PERSONS WITH MARGINAL ATTACHMENT TO THE LABOUR FORCE
(Source of data: Table 1)



The number of persons aged 15 and over who were not in the labour force increased from 4,513,200 in March 1984 to 4,613,800 in September 1984. The proportion of these persons who were considered to have marginal attachment to the labour force decreased from 16.6 per cent (750,000) in March to 15.7 per cent (726,300) in September.

The number of discouraged jobseekers decreased from 116,100 in March to 93,700 in September. This decrease was largely due to the decrease in the number of persons who reported 'considered too young or too old by employers' or 'no jobs in locality or line of work' as their main reason for not actively looking for work.

The increase in the number of persons with marginal attachment to the labour force who wanted to work and were actively looking for work continued the seasonal pattern of recent years. In September 1984 there were 56,400 such persons, compared with 25,700 in March 1984 and 53,800 in September 1983. Most of this seasonal change occurred in the group of persons who were actively looking for work but were not available to start work within four weeks.

EXPLANATORY NOTES

Introduction

Since 1975, the ABS has conducted regular surveys of persons not in the labour force, seeking information on their labour force aspirations and, if appropriate, their availability for work and reasons for not currently looking for work. As interest has grown over the years in this component of the population, various modifications have been made to the survey to provide a more comprehensive range of data. The September 1983 survey was further modified by the introduction of a new concept, 'marginal attachment to the labour force' (see paragraphs 4 and 13) and some improvements were made to the measure of discouraged jobseekers. These changes caused a break in series (see paragraphs 24 to 30).

2. Persons not in the labour force are by definition those persons who do not meet the criteria that would enable them to be classified as being in the labour force. To be classified as being in the labour force, a person must be aged 15 or over and be either *employed* or *unemployed*.

3. *Persons not in the labour force*, therefore, include all persons aged 15 and over who are not employed; who want work but do not meet the criteria to be classified as unemployed; who do not want to work; or who through incapacity or infirmity can not work.

4. The revised survey now provides more detailed characteristics concerning those persons who do not meet all of the criteria to be classified as unemployed but who have *marginal attachment to the labour force*. For the purposes of this survey, *marginal attachment* includes

persons who were not actively looking for work but who wanted to work and were available to start work within four weeks and persons who were actively looking for work but were not available for work in the week prior to interview (the survey week).

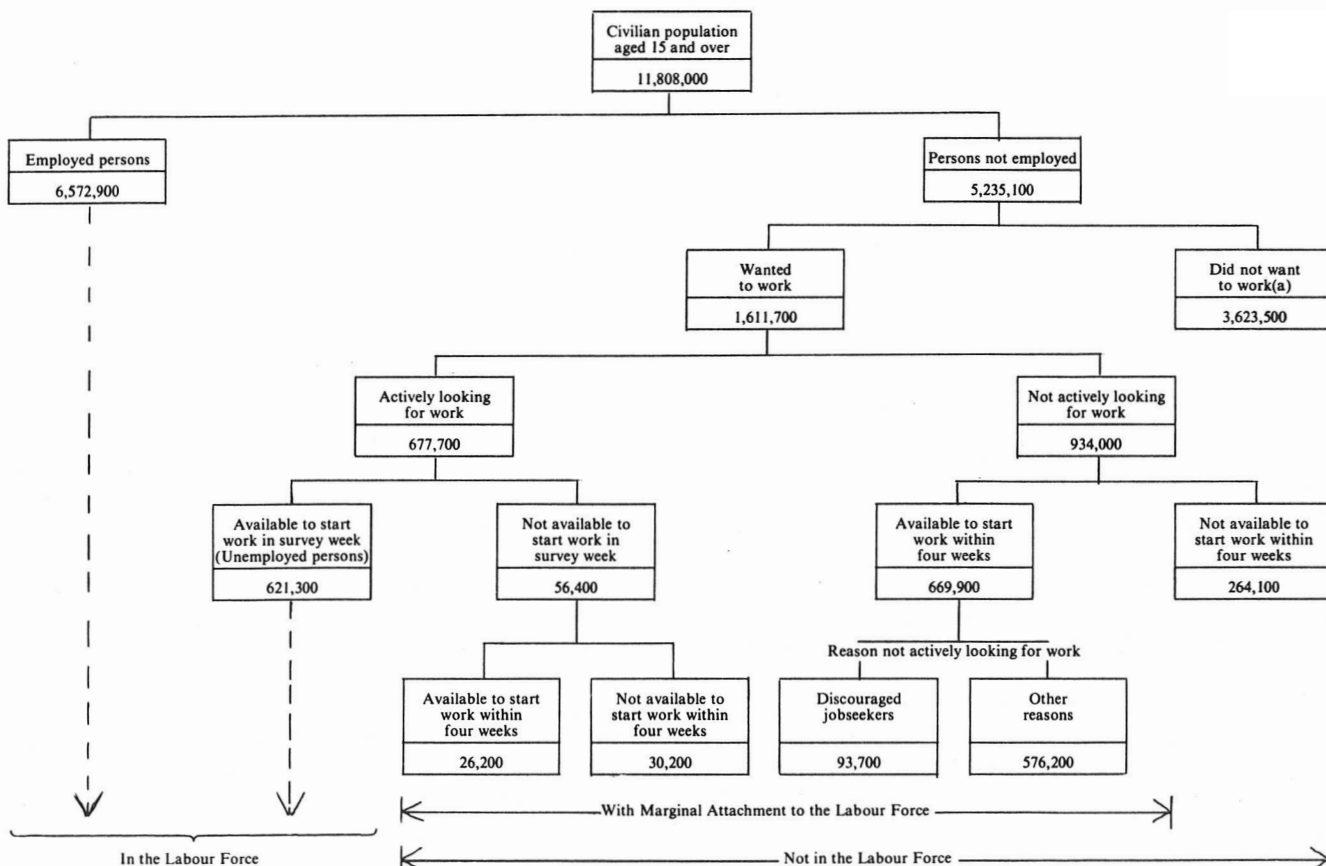
5. The criteria determining those in the labour force are based on actual activity (i.e. working or looking for work) during the survey week. The criteria associated with marginal attachment to the labour force, in particular the concepts of wanting to work, availability to start work and reasons for not actively looking, are more subjective and are not based on respondents' actual activity. Hence, the measurement of these criteria is affected by the respondents' own interpretation of the concepts used. Individual respondent's interpretation is affected by such factors as the respondent's work aspirations as well as their family, economic and other commitments.

6. *Discouraged jobseekers* (a subcategory of those with marginal attachment) are those persons who were available to start work within four weeks but who were not actively looking for work for reasons which are assessed to indicate discouragement. (Refer to paragraph 17 for a fuller definition.)

7. The survey also provides details of those persons who state that they want to work, but who are not defined as having marginal attachment to the labour force.

8. The various groups of persons either in the labour force or not in the labour force, including those marginally attached to the labour force, are shown schematically in the following diagram.

RELATIONSHIP OF PERSONS WITH MARGINAL ATTACHMENT TO THE LABOUR FORCE TO PERSONS IN OR NOT IN THE LABOUR FORCE



(a) Includes institutionalised and permanently unable to work.

9. This survey was run in conjunction with the September 1984 labour force survey conducted throughout Australia. During the two weeks beginning Monday 10 September 1984 specially trained interviewers asked questions of those of the 72,000 respondents in the September labour force survey who fell within the scope of this survey.

10. Results of similar surveys, which have been conducted each March and September since March 1979, and also in May 1977 and November 1975, have been published in catalogue 6220.0, as well as in previous issues of this preliminary publication.

11. This publication contains only a summary of the results of the survey. Estimates shown are preliminary and may be revised. Further information which will be published as soon as possible is available on request.

Scope

12. This supplementary survey to the labour force survey included all civilians not in the labour force aged fifteen and over except:

- (a) certain diplomatic personnel of overseas governments, customarily excluded from census and estimated populations;
- (b) overseas residents in Australia;
- (c) dependants of non-Australian defence forces personnel stationed in Australia.

Definitions

13. *Persons with marginal attachment to the labour force* are those who are not in the labour force in survey week and:

- (a) *wanted to work and were available to start work within four weeks*; or
- (b) *were actively looking for work but were not available to start work within four weeks*.

14. *Persons who wanted to work and were available to start work within four weeks* are those who:

- (a) in the four weeks up to the end of the survey week had taken *active steps* to find work and who were available to start work within four weeks, even though they were unable to start in survey week for reasons other than own temporary illness or injury; or
- (b) were available to start work within four weeks and:
 - (i) although claiming to have looked for work in the four weeks up to the end of the survey week, had not taken *active steps* to find work; or
 - (ii) in the four weeks up to the end of the survey week had not looked for work but in the survey answered 'yes' or 'maybe' to the question '*Even though you have not been looking for work would you like a full-time or part-time job?*'.

15. *Persons who were actively looking for work but were not available to start work within four weeks* are those who in the four weeks up to the end of survey week had taken active steps to find work but were not available to start work in survey week for reasons other than own temporary illness or injury or within the four weeks following the interview.

16. *Active steps to find work* comprise writing, telephoning or applying in person to an employer for work; answering a newspaper advertisement for a job; checking factory or Commonwealth Employment Service noticeboards; being registered with the Commonwealth Employment Service; checking or registering with any other employment agency; advertising or tendering for work; and contacting friends or relatives.

17. *Discouraged jobseekers* are those persons with marginal attachment to the labour force who wanted to work and were available to start work within four weeks but whose main reason for not taking active steps to find work was that they believed they would not be able to find a job for any of the following reasons: considered by employers to be too young or too old; difficulties with language or ethnic background; lacked the necessary schooling, training, skills or experience; no jobs in their locality or line of work; or no jobs at all.

18. Persons are classified as *married* if they are reported as being married (including de facto) and their spouse was a usual resident of the household at the time of the survey. The *not-married* category includes persons who have never married, or are separated, widowed or divorced; as well as those who, although reported as being married, did not have a spouse who usually lived in the household. For effects on estimates of marital status, see paragraph 31.

19. *Family status* characteristics are explained in detail in The Labour Force, Australia (6203.0). It should be noted that they were not obtained for all persons included in the survey. Family information was not collected for the following persons:

- (a) all persons enumerated in non-private dwellings (including hotels, motels, hospitals and other institutions);
- (b) persons enumerated as visitors to, rather than usual residents of, private dwellings; and
- (c) where it was not possible to obtain family information relating to *all* the usual residents of a household, e.g. where one member of the family was a member of the permanent defence forces and therefore outside the scope of the survey.

20. A *job* is any paid employment, full-time or part-time, lasting two weeks or more.

21. Unless otherwise stated, all characteristics referenced in this publication are as of the survey week.

22. Further definitions of labour force and demographic classifications appearing in this publication are given in *The Labour Force, Australia* (6203.0).

Population Benchmarks

23. Following the change in official population estimates to a place of usual residence basis after the 1981 Census the population benchmarks used in this survey are compiled according to place of usual residence. For an explanation of the new conceptual basis of population estimates see *The Labour Force, Australia* (6203.0).

Discontinuities in the series

24. The modifications made to the September 1983 survey included the addition of certain groups of persons excluded from previous 'Persons Not in the Labour Force' surveys and several alterations to the order and wording of questions used in the survey. These modifications are described in paragraphs 25 to 30.

25. Only those respondents who reported that they were available to start work within the next four weeks were asked their reasons for not actively looking for work. Hence persons classified as discouraged jobseekers in this survey must have been available to start work within four weeks. This availability criterion was not applied to the definition of discouraged jobseekers in surveys prior to September 1983. The application of the criterion removes the previous anomaly that persons were classified as discouraged jobseekers regardless of whether or not they were available to start work in the near future.

26. Persons not in the labour force aged 65 and over were added to the survey in September 1983 and may be classified as being discouraged jobseekers or as otherwise having marginal attachment to the labour force.

27. Persons belonging to two other groups were added to the survey in September 1983:

- (a) persons who were actively looking for work but who were unable to start in survey week for reasons other than their own temporary illness or injury. These persons are classified as having marginal attachment to the labour force, but not as discouraged jobseekers; and
- (b) persons who had been away from work without pay for four weeks or longer and had not been actively looking for work. Of these persons, those who wanted to work and were available to start work within four weeks are classified as having marginal attachment to the labour force, but not as discouraged jobseekers.

28. Respondents not in the labour force who wanted to work and were available to start work within four weeks were asked their *main* reason for not actively looking for work to determine, among other things, whether the respondents should be classified as discouraged jobseekers. In surveys prior to September 1983, the *main* reason was not asked and respondents were classified as discouraged jobseekers or otherwise according to the 'highest ranked reason' given for not actively looking for work.

29. An extra reason for not actively looking for work ('no jobs at all') was added to the discouraged jobseeker list.

30. A change was made to the ordering of the questions. The responses to some questions may differ from responses in previous surveys because of this change to question order and the subjective nature of some of the questions.

31. A modification to the definition of marital status was introduced to this survey in March 1984. Paragraph 18 outlines this definition. Consequently, estimates of marital status contained in this publication are not comparable with estimates published for this survey prior to March 1984 which classified as married all respondents who reported that they were married or separated.

Reliability of the estimates

32. Estimates in this publication are subject to two sources of error:

- (a) *sampling error*: since the estimates are based on information obtained from occupants of a sample of dwellings, they may differ from the figures that would have been produced if all dwellings had been included in the survey. One measure of the likely difference is given by the *standard error*. More information about this topic is contained in *The Labour Force, Australia* (6203.0). A table of estimated standard errors for this survey follows these notes. Estimates with a standard error of more than about 27 per cent have not been shown in this publication, as the degree of sampling variability would seriously detract from their value for most reasonable uses. Although figures for these small components can, in some cases, be derived by subtraction they should not be regarded as reliable.
- (b) *non-sampling error*: inaccuracies may occur because of imperfections in reporting by interviewers and respondents and errors made in the coding and processing of data. These inaccuracies may occur in any enumeration, whether it be a full count or only a sample. Every effort is made to reduce the non-sampling error to a minimum by careful design of questionnaires, intensive training and supervision of interviewers and efficient operating procedures.

Related publications

33. Other ABS publications which may be of interest include:

The Labour Force, Australia (6203.0)—issued monthly

Labour Force Experience, Australia, during the year ending February 1984 (6206.0)

Job Search Experience of Unemployed Persons (excluding persons who were stood down), Australia, July 1984, (Preliminary), (6221.0)

Employment, Underemployment and Unemployment 1966-1983, Australia (6246.0)

34. Current publications produced by the ABS are listed in the *Catalogue of Publications, Australia* (1101.0). The ABS also issues, on Tuesdays and Fridays, a *Publications Advice* (1105.0) which lists publications to be released in the next few days. The Catalogue and Publications Advice are available from any ABS office.

35. Because figures have been rounded, discrepancies may occur between sums of the component items and totals.

Symbols and other usages

- * subject to sampling variability too high for most practical uses. See paragraph 32 above.
- .. not applicable.

R. J. CAMERON
Australian Statistician

STANDARD ERRORS OF ESTIMATES

Size of estimate (Persons)	Approximate standard error of estimate		Size of estimate (Persons)	Approximate standard error of estimate	
	Persons	Per cent of estimate		Persons	Per cent of estimate
3,000	800	26.7	50,000	2,900	5.8
4,000	920	23.0	100,000	3,900	3.9
5,000	1,000	20.0	200,000	5,100	2.6
10,000	1,400	14.0	300,000	6,000	2.0
20,000	2,000	10.0	500,000	7,200	1.4
			1,000,000	9,100	0.9

**TABLE 1. CIVILIAN POPULATION AGED 15 AND OVER : LABOUR FORCE STATUS,
SEPTEMBER 1984**
(* 000)

	March 1984			September 1984		
	Males	Females	Persons	Males	Females	Persons
Civilian population aged 15 and over	5,768.4	5,950.1	11,718.5	5,812.3	5,995.7	11,808.0
Employed	4,052.3	2,451.9	6,504.2	4,059.1	2,513.8	6,572.9
Unemployed	404.7	296.3	701.0	376.8	244.5	621.3
Persons not in the labour force	1,311.3	3,201.9	4,513.2	1,376.5	3,237.4	4,613.8
With marginal attachment to the labour force	154.2	595.8	750.0	163.0	563.3	726.3
Wanted to work and available to start work within four weeks	150.9	592.1	743.0	144.6	551.5	696.1
Were actively looking for work	9.3	9.4	18.7	10.8	15.4	26.2
Were not actively looking for work	141.6	582.7	724.3	133.8	536.1	669.9
Discouraged jobseekers	24.8	91.3	116.1	19.0	74.7	93.7
Not actively looking for other reasons	116.8	491.4	608.2	114.8	461.5	576.2
Were actively looking for work but not available to start work within four weeks	3.3	3.7	7.0	18.4	11.8	30.2
Without marginal attachment to the labour force	1,157.2	2,606.0	3,763.3	1,213.5	2,674.0	3,887.6
Wanted to work but not actively looking for work and not available to start work within four weeks	48.6	175.3	224.0	67.6	196.4	264.1
Did not want to work	987.0	2,288.1	3,275.2	1,020.6	2,345.0	3,365.6
Permanently unable to work	31.9	20.3	52.3	33.5	23.0	56.5
Institutionalised(a)	89.5	122.3	211.8	91.7	109.6	201.4

(a) Includes students boarding at school, some patients in hospitals and sanatoria and inmates of reformatories, jails etc.

TABLE 2. PERSONS NOT IN THE LABOUR FORCE WITH MARGINAL ATTACHMENT TO THE LABOUR FORCE : MAIN REASON FOR NOT ACTIVELY LOOKING FOR WORK AND INTENTION TO LOOK FOR WORK IN THE NEXT TWELVE MONTHS, SEPTEMBER 1984
(* 000)

Main reason for not actively looking for work	Intention to look for work					Total		
	Intended to look	Might look	Would not look	Did not know	Not asked(a)	Males	Females	Persons
Wanted to work and available to start work within four weeks					8.8	*	6.1	8.8
Had a job to go to
Personal reasons	119.3	37.4	76.7	8.4	..	94.0	147.8	241.8
Own ill health, disability, pregnancy	24.1	13.3	20.6	*	..	25.8	34.8	60.6
Attending an educational institution	63.7	8.5	18.8	*	..	47.3	46.1	93.4
Had no need to work	9.2	8.9	21.7	*	..	8.6	32.9	41.5
Give others a chance	*	*	6.6	*	..	*	8.2	9.3
Welfare payments/pension may be affected	3.9	4.3	8.3	*	..	3.9	13.5	17.4
Moved house/holidays	17.7	*	*	*	..	7.3	12.3	19.6
Family reasons	82.0	51.7	112.2	17.2	..	4.8	258.3	263.1
Ill health of other than self	5.0	4.0	4.8	*	..	*	14.1	15.2
Unable to find suitable childcare	16.8	11.8	42.1	5.7	..	*	75.5	76.3
Children too young/preferred to look after children	46.4	28.9	50.3	7.3	..	*	131.6	132.9
Other family considerations	13.8	7.0	15.0	*	..	*	37.1	38.7
Discouraged jobseekers	41.4	18.0	29.6	4.7	..	19.0	74.7	93.7
Considered too young or too old by employers	6.6	4.8	14.9	*	..	7.7	19.3	26.9
Difficulties with language or ethnic background	3.2	*	*	*	..	*	4.4	5.7
Lacked necessary schooling, training, skills or experience	3.7	*	*	*	..	*	7.9	8.9
No jobs in locality or line of work	15.7	5.7	6.0	*	..	5.6	23.4	29.0
No jobs at all	12.3	4.9	4.8	*	..	3.5	19.7	23.2
No jobs in suitable hours	9.7	5.4	3.1	*	..	*	17.4	19.3
Other reasons	18.4	3.4	6.9	*	..	8.0	21.4	29.5
Did not know	*	*	*	*	..	*	3.6	4.2
Were actively looking for work	26.2	10.8	15.4	26.2
Not asked(b)	9.5	*	6.8	9.5
Were actively looking for work but not available to start work within four weeks	30.2	18.4	11.8	30.2
Total	272.9	116.1	229.6	33.0	74.8	163.0	563.3	726.3

(a) Comprises persons who had a job to go to, persons who took active steps to find work and persons as defined in footnote (b) below. (b) Persons who had a job but, up to the end of survey week, had been away from work without pay for four weeks or longer and had not been actively looking for work.

TABLE 3. PERSONS NOT IN THE LABOUR FORCE WITH MARGINAL ATTACHMENT TO THE LABOUR FORCE : SUMMARY OF CHARACTERISTICS, SEPTEMBER 1984 ('000)

	Discouraged jobseekers			All persons who wanted to work and were available to start work within four weeks			All persons with marginal attachment to the labour force		
	Males	Females	Persons	Males	Females	Persons	Males	Females	Persons
Total	19.0	74.7	93.7	144.6	551.5	696.1	163.0	563.3	726.3
Age group (years)—									
15-19	*	5.7	8.4	52.8	58.7	111.5	65.5	65.8	131.3
20-24	*	*	5.1	14.0	58.7	72.8	16.4	61.2	77.6
25-34	*	12.9	13.8	14.3	187.6	201.9	14.7	188.7	203.4
35-44	*	17.8	19.1	14.9	129.0	143.9	16.5	129.9	146.4
45-54	*	18.0	19.9	11.6	71.8	83.4	12.2	72.0	84.2
55-64	4.4	12.3	16.7	22.6	36.8	59.4	23.1	36.8	59.9
65 and over	5.5	5.2	10.7	14.3	8.9	23.2	14.6	8.9	23.4
Family status—									
Member of a family	14.1	62.8	76.9	116.2	495.9	612.1	130.6	505.8	636.4
Husband or wife	8.9	48.1	57.0	48.6	360.6	409.2	51.3	362.4	413.7
With children aged 0-14 present	*	24.8	25.5	16.7	271.8	288.5	18.7	273.3	292.0
Without children aged 0-14 present	8.2	23.3	31.5	31.9	88.8	120.7	32.6	89.1	121.7
Not-married family head	*	7.9	7.9	5.8	78.0	83.8	5.8	78.7	84.5
With children aged 0-14 present	*	4.6	4.6	3.4	67.1	70.5	3.4	67.8	71.2
Without children aged 0-14 present	*	3.2	3.2	*	10.9	13.3	*	10.9	13.3
Child of family head	3.4	5.7	9.1	57.9	53.4	111.4	69.5	60.9	130.4
Other relative of family head	*	*	3.0	3.9	3.9	7.8	4.0	3.9	7.9
Not a member of a family	3.0	6.9	9.9	18.2	22.6	40.8	19.3	23.7	43.0
Living alone	*	6.6	8.6	8.8	17.4	26.2	8.8	17.6	26.4
Not living alone	*	*	*	9.4	5.2	14.6	10.5	6.1	16.6
Not family coded	*	4.9	6.8	10.2	33.0	43.2	13.2	33.8	46.9
Work preference—									
Preferred to work full-time	9.6	13.6	23.2	69.0	85.7	154.6	83.4	93.5	176.9
Preferred to work part-time	8.2	57.9	66.1	70.2	451.7	522.0	74.2	455.1	529.2
No preference	*	3.2	4.5	5.4	14.1	19.5	5.5	14.8	20.2
Whether looked for work in the last 12 months(a)—									
Had not looked for work	10.7	48.9	59.6	92.5	426.0	518.6	92.5	426.0	518.6
Had looked for work	8.3	25.8	34.1	52.1	125.5	177.5	70.5	137.3	207.8
Less than 5 weeks ago	*	6.1	8.0	21.2	44.1	65.3	39.6	55.9	95.5
5 and less than 8 weeks ago	3.0	7.6	10.6	16.1	30.6	46.7	16.1	30.6	46.7
8 and less than 13 weeks ago	*	4.9	6.0	5.4	20.3	25.7	5.4	20.3	25.7
13 and less than 52 weeks ago	*	7.2	9.4	9.4	30.5	39.9	9.4	30.5	39.9
Time since last job—									
Had never had a job	*	8.6	11.1	41.4	59.3	100.8	51.8	64.9	116.7
Had had a job	16.6	66.0	82.6	103.2	492.2	595.3	111.3	498.4	609.7
Under 12 months	4.3	7.9	12.2	46.1	96.5	142.7	51.5	101.2	152.7
Under 6 months	*	4.4	6.8	27.8	56.4	84.2	29.1	58.3	87.4
6 and under 12 months	*	3.5	5.4	18.4	40.1	58.5	22.4	42.9	65.3
1 and under 3 years	4.0	13.4	17.5	27.3	105.3	132.6	29.5	105.8	135.3
3 and under 10 years	6.7	23.4	30.1	25.5	181.8	207.3	26.1	182.5	208.7
10 years and over	*	21.3	22.8	4.2	108.6	112.8	4.2	108.8	113.0
Reason for leaving last job—									
Dismissed, retrenched	5.6	12.6	18.2	22.2	61.4	83.6	23.7	61.4	85.1
Seasonal or temporary job; returned to studies	*	6.8	8.3	17.7	55.3	72.9	21.7	59.5	81.1
Retired/did not want to work any longer	4.8	3.7	8.5	18.1	22.6	40.7	18.1	22.6	40.7
Unsatisfactory work arrangements	*	*	3.5	6.4	22.3	28.7	6.7	22.4	29.1
Own ill health or injury	*	5.9	6.8	20.5	30.4	50.9	21.8	30.5	52.3
To get married	*	5.8	5.8	*	40.6	40.6	*	40.6	40.6
Pregnancy/to have children	*	11.1	11.1	*	147.3	147.4	*	148.2	148.3
To look after family, house or someone else	*	5.0	5.0	*	37.1	39.1	*	37.2	39.4
Travel, moved house, spouse transferred	*	9.7	12.0	8.7	53.8	62.5	8.9	54.2	63.1
Other reasons	*	*	3.5	4.7	14.5	19.3	5.3	15.0	20.3
Never had a job	*	8.6	11.1	41.4	59.3	100.8	51.8	64.9	116.7
Not asked(b)	*	*	*	*	6.8	9.5	*	6.8	9.5

(a) Persons who had left a job in the last twelve months were only asked whether they had looked for work since that job. (b) Persons who had a job but, up to the end of survey week, had been away from work without pay for four weeks or longer and who wanted to work, were available to start work within four weeks and had not been actively looking for work.

TABLE 4. PERSONS NOT IN THE LABOUR FORCE WHO WANTED TO WORK BUT WERE NOT ACTIVELY LOOKING FOR WORK AND WERE NOT AVAILABLE TO START WORK WITHIN FOUR WEEKS : REASON NOT AVAILABLE TO START WORK WITHIN FOUR WEEKS AND INTENTION TO LOOK FOR WORK IN THE NEXT TWELVE MONTHS, SEPTEMBER 1984 ('000)

<i>Reason not available to start work within four weeks</i>	<i>Intention to look for work</i>					<i>Total</i>		
	<i>Intended to look</i>	<i>Might look</i>	<i>Would not look</i>	<i>Did not know</i>	<i>Not asked(a)</i>	<i>Males</i>	<i>Females</i>	<i>Persons</i>
Personal reasons	59.9	23.7	46.0	5.8	5.8	63.1	78.0	141.1
Own ill health, etc.	17.0	13.4	24.2	3.2	4.2	24.5	37.5	62.0
Studying	38.7	8.5	18.3	*	*	36.9	31.5	68.4
At school	35.0	7.7	17.2	*	*	33.3	29.0	62.3
Other educational institution	3.7	*	*	*	*	3.6	*	6.1
Moved house/holidays	4.2	*	3.5	*	*	*	8.9	10.7
Family reasons	18.1	16.9	58.4	3.2	8.1	*	102.9	104.6
Ill health of other than self	*	*	6.1	*	*	*	9.9	10.7
Unable to find suitable child care	*	*	7.9	*	*	*	12.9	12.9
Children too young/preferred to look after children	13.6	12.4	44.4	*	8.0	*	80.0	81.0
Other reasons	4.2	*	10.1	*	*	*	15.6	18.3
Total								
Males	29.8	12.9	20.0	*	*	67.6
Females	52.4	29.9	94.5	6.9	12.6	..	196.4	..
Persons	82.2	42.8	114.5	9.6	15.0	264.1

(a) Persons who had a job but, up to the end of survey week, had been away from work without pay for four weeks or longer and had not been actively looking for work.